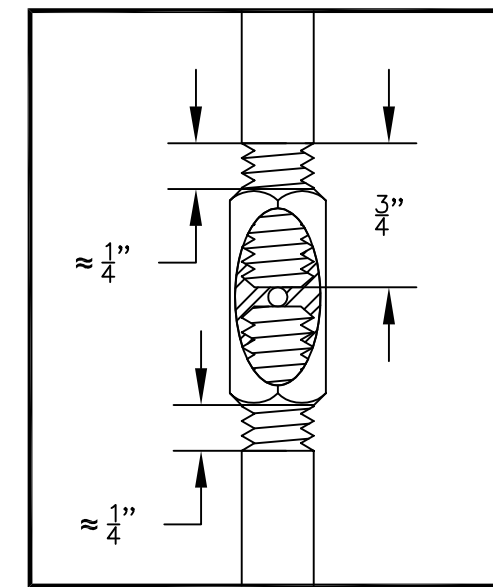


**HURRI-BOLT, INC.**  
 10704 N. 46TH STREET - TAMPA, FL 33617  
 PHONE (813) 626-1676 • FAX (813) 626-8942  
 TOLL FREE (800) 226-6888

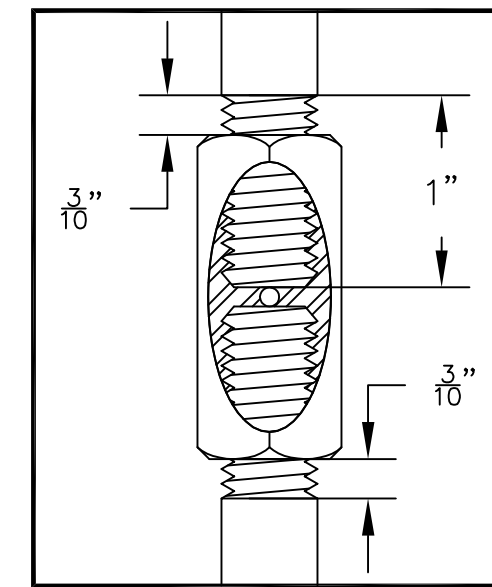
FOR MORE INFORMATION,  
 INCLUDING CAD FILES, INSTALLATION GUIDES,  
 AND CD-ROM REQUESTS- VISIT OUR WEBSITE!  
[www.hurribolt.com](http://www.hurribolt.com)

**HURRI-BOLT TOP PLATE SYSTEM  
 INSTALLATION INSTRUCTION SUMMARY**

- 8 THREAD THE HURRI-BOLT SQUARE TOP PLATE WASHER (HBST) AND HURRI-BOLT HEX NUT (HBN) ON TO THE HBCR OR HBT, ANCHORING THE TOP PLATE ALL THE WAY TO THE FOUNDATION. BEFORE THE CEILING GYPSUM IS INSTALLED AND AFTER THE ROOFING MATERIAL AND DRYWALL IS LOADED INTO THE BUILDING, THE TOP HBN SHOULD BE RETIGHTENED TO ACCOUNT FOR SETTLING AND TO PRELOAD THE BUILDING USING STANDARD FORCE WITH A HAND WRENCH. DO NOT OVERTIGHTEN THE TOP NUT DEFLECTING THE TOP PLATES OR CRUSHING THE WOOD UNDER TOP PLATE WASHER. A PROPERLY TIGHTENED ROD WILL FEEL TAUGHT.
- 7 INSTALL AN HBT OR A HURRI-BOLT CUSTOM TOP ROD (HBCR) THAT IS FURNISHED TO MATCH THE TOP PLATE HEIGHTS. IF NEEDED, CUT THE HBT SO THAT A MINIMUM OF 1/2" PROTRUDES ABOVE THE TOP PLATE. AN ANGLE GRINDER WITH AN ABRASIVE CUT OFF WHEEL IS RECOMMENDED FOR CUTTING AND BUFFING THE ROD TO RESTORE THE THREAD PROFILE.



3A 3/8" COUPLING NUT (HBC38) CUT AWAY VIEW  
 SCALE: 1" = 1"

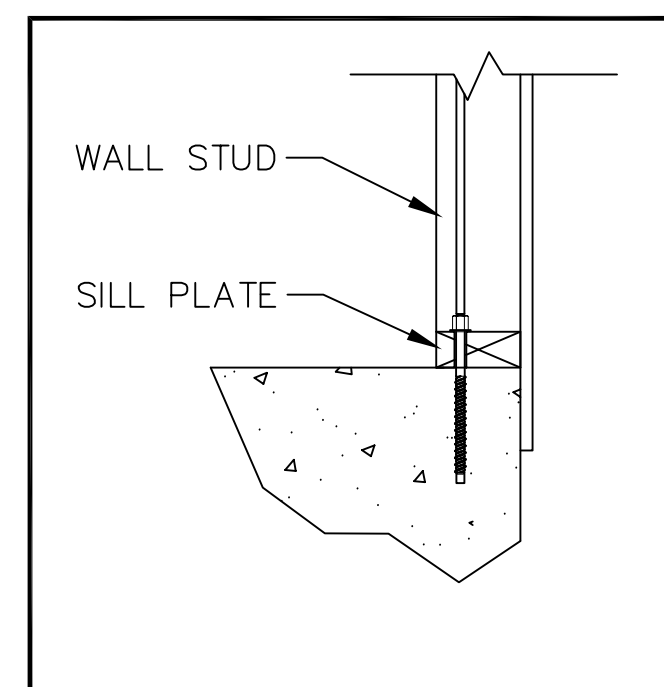


3B 1/2" COUPLING NUT (HBC12) CUT AWAY VIEW  
 SCALE: 1" = 1"

VISUALLY INSPECT ALL COUPLING NUTS BY VERIFYING THE APPROPRIATE AMOUNT OF THREAD IS VISIBLE ABOVE AND BELOW.

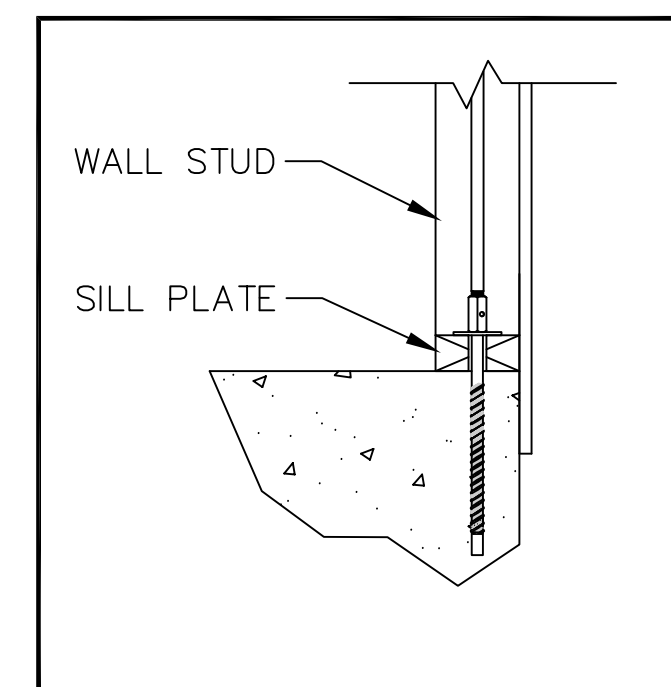
- 6 AFTER INSTALLING THE LAST HBC, TIGHTEN THE RODS FROM THE TOP FLOOR USING A SOCKET ON A DRILL MOTOR. AS EACH ROD BOTTOMS OUT ON THE POSITIVE STOP IN THE HBC, IT TURNS THE ROD BELOW ALL THE WAY TO THE FOUNDATION.
- 5 ATTACH AN HBC TO THE END OF THE HBR/HBT. CONTINUE ALTERNATING BETWEEN THE HBR/HBT AND HBC UNTIL THE LAST HBC IS REACHED.
- 4 ATTACH A HURRI-BOLT 6' SMOOTH ROD (HBR) OR A HURRI-BOLT 6' ALL THREAD ROD (HBT) ON THE HBC OR DIRECTLY ON THE HWC38.
- 3 ATTACH A HURRI-BOLT COUPLING NUT (HBC) TO THE HW12 OR HBE. THE POSITIVE STOP IN THE HBC PREVENTS THE COUPLER FROM OVER RUNNING THE CENTER. A COUPLING NUT IS NOT REQUIRED FOR HWC38 INSTALLATION.
- 2 FOR HW12 INSTALLATION, THREAD A 2"x2" HURRI-BOLT SQUARE SILL PLATE WASHER, HDG (HBSS12G) ON THE HW12. A SILL PLATE WASHER IS NOT REQUIRED FOR HWC38 OR HBE INSTALLATION.
- 1 USING ONE OF THE METHODS BELOW, ANCHOR THE HURRI-BOLT SYSTEM TO THE SLAB.

**A.** HURRI-BOLT 3/8" ROD ASSEMBLIES USE A HURRI-WEDGE INTEGRATED COUPLER (HWC38) THAT CAN BE INSTALLED AFTER FRAMING. SIMPLY DRILL A HOLE IN THE CONCRETE 2 1/2" MINIMUM FROM THE EDGE WITH A STANDARD 3/8" ANSI MASONRY BIT, 4 1/2" EMBEDMENT. THE HWC38 CAN BE LOADED IMMEDIATELY.



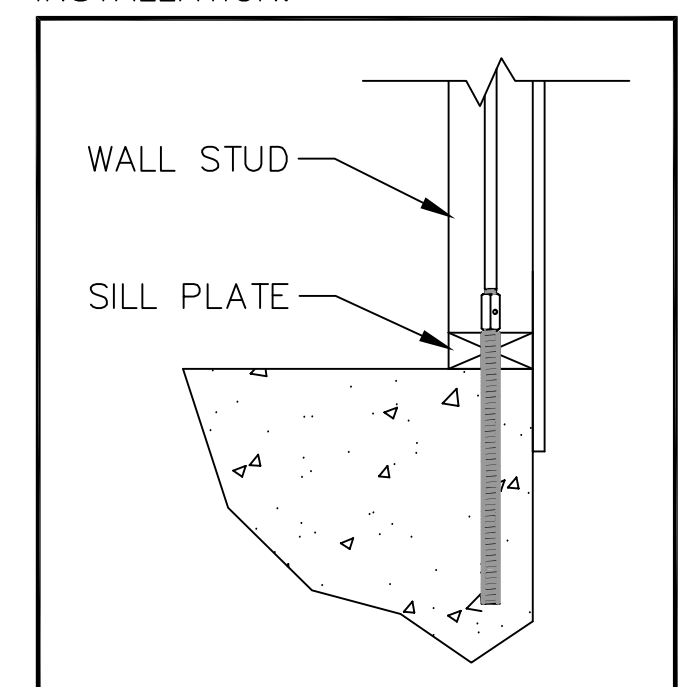
2A HURRI-WEDGE INTEGRATED COUPLER (HWC38)  
 SCALE: 1-1/2" = 1"

**B.** HURRI-BOLT 1/2" ROD ASSEMBLIES USE A HURRI-WEDGE DRILLED IN ANCHOR (HW12) THAT CAN BE INSTALLED AFTER FRAMING. SIMPLY DRILL A HOLE IN THE CONCRETE 1 3/4" MINIMUM FROM THE EDGE WITH A STANDARD 1/2" ANSI MASONRY BIT, 6 5/8" EMBEDMENT. THE HW12 CAN BE LOADED IMMEDIATELY.

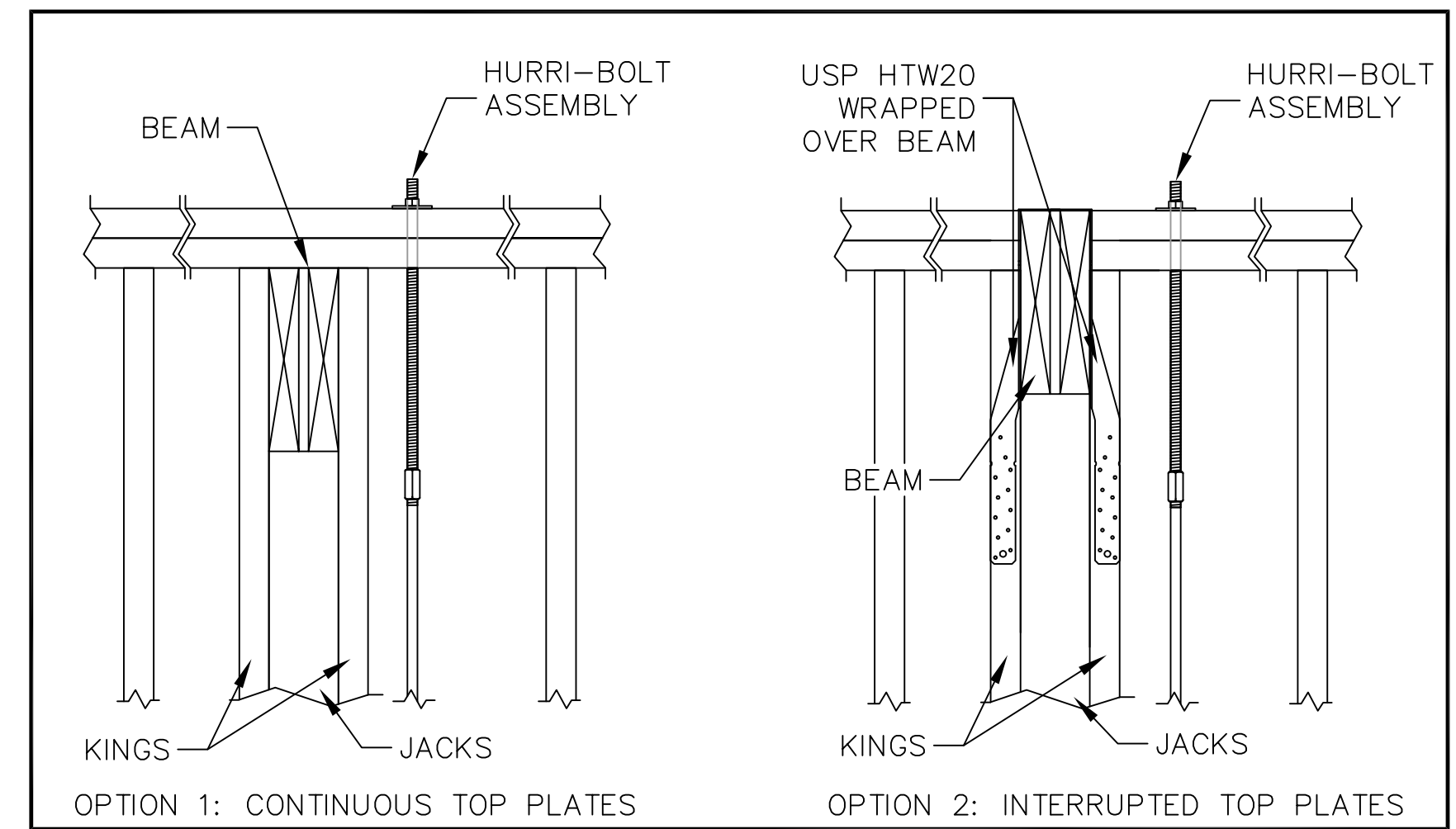


2B HURRI-WEDGE DRILLED IN ANCHOR (HW12)  
 SCALE: 1-1/2" = 1"

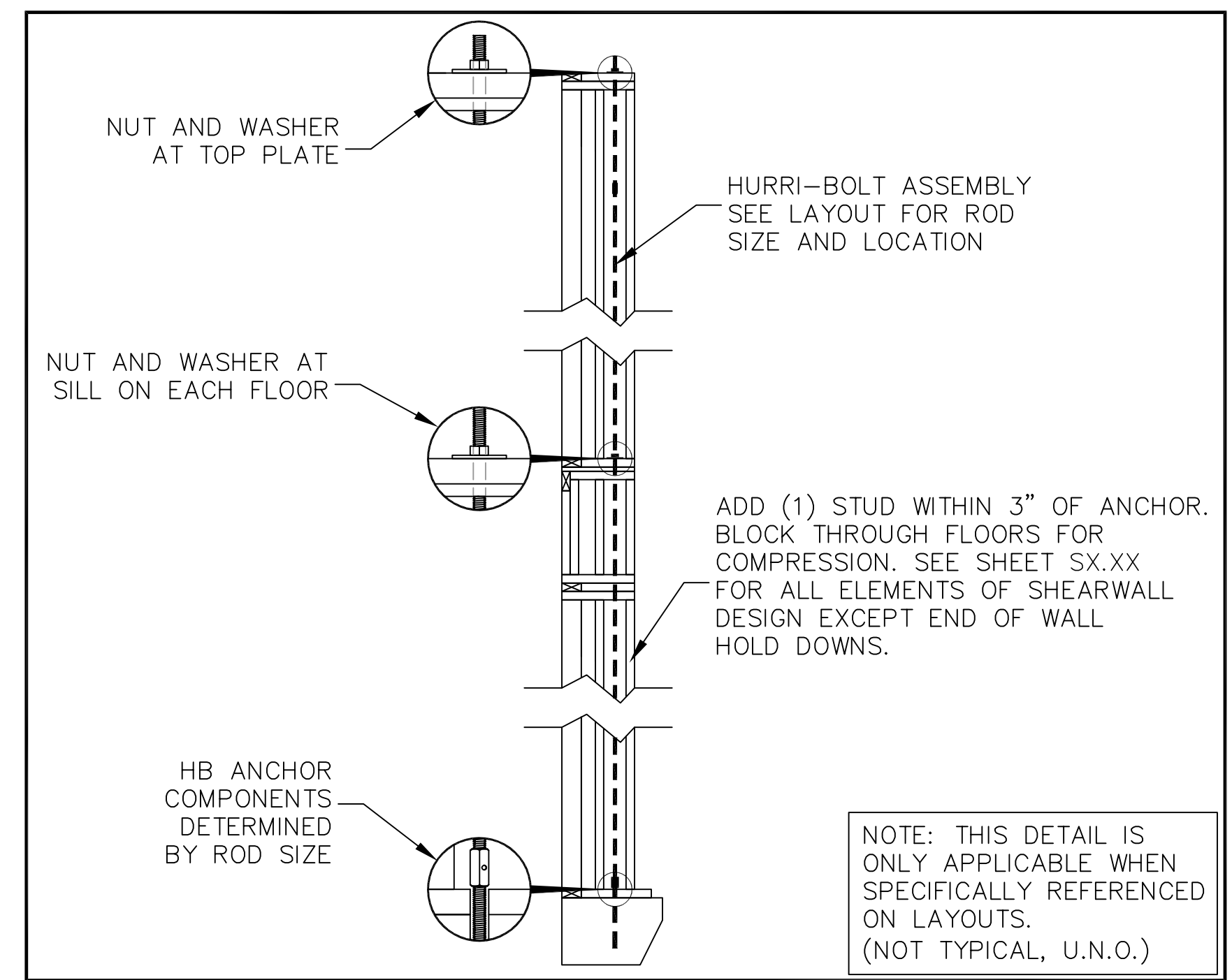
**C.** EPOXY ANCHORS (HBE) CAN BE INSTALLED AFTER FRAMING. SIMPLY DRILL A HOLE IN THE CONCRETE 1 1/2" MINIMUM FROM THE EDGE WITH THE APPROPRIATE STANDARD ANSI MASONRY BIT, SEE LAYOUT FOR DIAMETER AND EMBEDMENT. FOLLOW MANUFACTURE'S INSTRUCTIONS FOR ULTRABOND 1 EPOXY INSTALLATION.



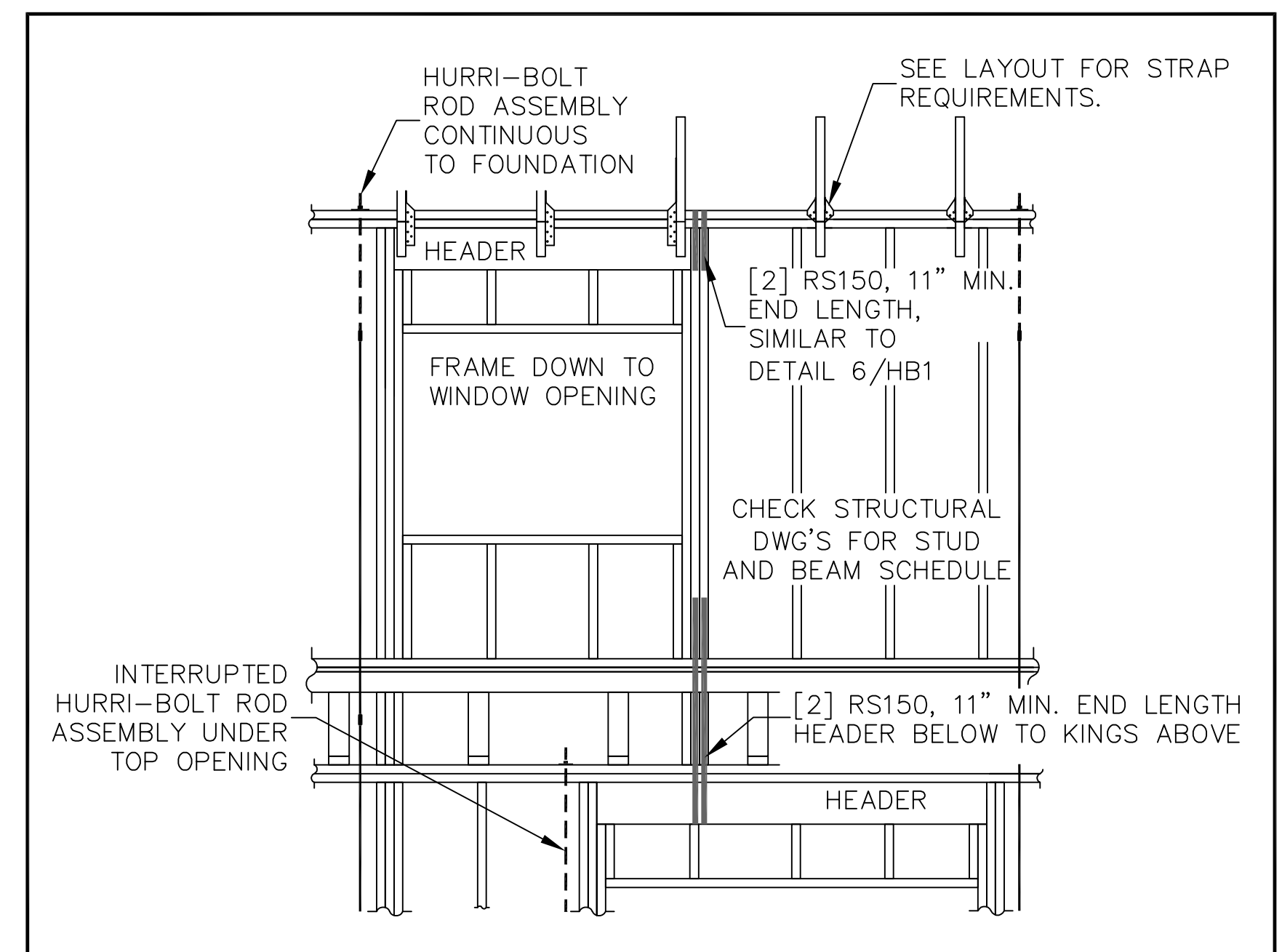
2C HURRI-BOLT EPOXY ANCHOR (HBE)  
 SCALE: 1-1/2" = 1"



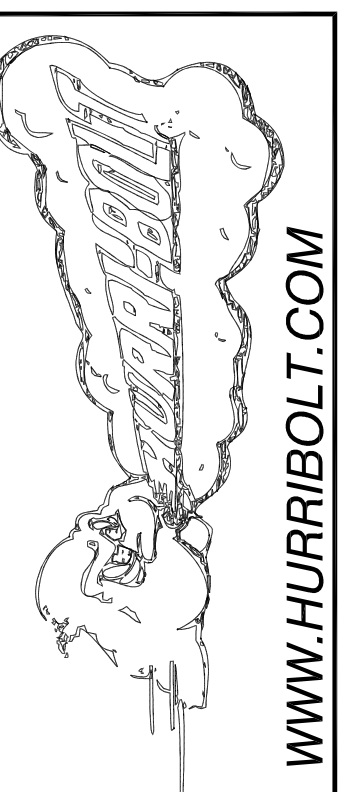
4 POCKET BEAM HOLD DOWN OPTIONS USING HURRI-BOLT ASSEMBLIES  
 SCALE: 1-1/2" = 1"



5 SHEARWALL HOLD DOWN USING ROD ASSEMBLY WITH NUT AND WASHER AT EACH FLOOR  
 SCALE: 1/2" = 1"



6 OFFSET HEADER HOLD DOWN USING HURRI-BOLT RODS AND STRAPS  
 SCALE: 1/2" = 1"



WWW.HURRIBOLT.COM

HURRI-BOLT DETAIL SHEET

BUILDER  
 PROJECT NAME  
 LOCATION, FLORIDA

REVISIONS

NO.	DATE	DESCRIPTION

PROJ. # 2009  
 DATE: 01/01/09  
 DWG. BY: YOUR INITIALS  
 FILE: HB3.DWG

SHEET #  
**HB3**